



Cathedral of St. Matthew the Apostle
PATRON SAINT OF CIVIL SERVANTS

Pilgrimage to Spain & Portugal

11 - 22 April, 2012

Madrid - Avila - Salamanca - Fatima - Santarem - Lisbon

Msgr. W. Ronald Jameson, Rector



\$3,499 per person (share basis)

Travel arrangements by:
Guido Adelfio, Bethesda Travel Center LLC

 **bethesda travel center**

Friday, 13 April Madrid

Daily hotel **breakfast** each morning. A guided city tour of Madrid will include the Plaza Mayor, the city's Cathedral, Mass, and a visit to the Royal Palace. A free afternoon will allow Pilgrimage-goers to explore the art treasures of the Prado and Thyssen-Bornemisza Museums, among others. **Dinner** included at the hotel. (Breakfast,D)

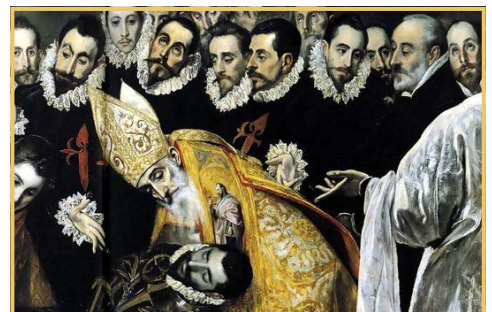
Saint Teresa's Prayer

May you trust God that you are exactly where you are meant to be.
May you not forget the infinite possibilities that are born of faith.
May you use those gifts that you have received, and pass on the love that has been given to you....
May you be content knowing you are a child of God....
Let this presence settle into your bones, and allow your soul the freedom to sing, dance, praise and love.
It is there for each and every one of us.
Saint Teresa, Pray for us.

Saturday, 14 April

Explore Toledo, home to El Greco's masterpiece *The Burial of the Count of Orgaz* in the Church of San Tome. The Cathedral of Toledo is a repository of renaissance art treasures; our guided visit will include Mass. Then, it's back to Madrid for some free time to continue discovering the city! **Dinner** at the hotel. (B,D)

Madrid - Toledo - Madrid

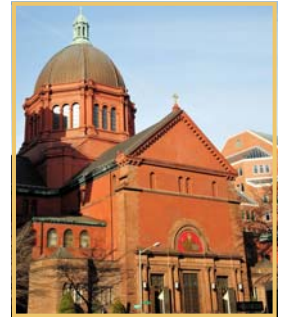


PRE-TRIP

Saturday, 10 September, 2011

Kick-off meeting in the West Conference Room following Vigil Mass at St. Matthew's Cathedral. Meet Guido Adelfio, President of Bethesda Travel, for a presentation uniquely tailored to inform parishioners and interested Pilgrimage-goers about trip details. All are welcome. Light refreshments will be served. 18h45-20h30

Washington, DC



Saturday, 24 March, 2012

This evening's Pilgrimage session in the East Conference Room will provide a thorough briefing on the final itinerary and what to expect during the Pilgrimage. Light refreshments will be served. 18h45-20h30

Washington, DC

PILGRIMAGE ITINERARY

{11-22 April 2012}

Wednesday, 11 April Washington, DC - Dulles - Paris

Gather at St. Matthew's this morning for a trip meeting. After Mass, transfer with Msgr. Jameson to Dulles [IAD] and board Air France [AF] 039, ETD 16h40 to Paris [CDG].

Thursday, 12 April

Paris - Madrid

Arrive at CDG at 06h00 and connect to AF 1300 at 09h35 to Madrid [MAD]. Upon arrival {11h40}, transfer by motorcoach to Hotel Catalonia Gran Via, in the very heart of Madrid. Light **lunch** plus free time to rest, relax or explore before Mass. **Dinner** in the hotel dining room. (Lunch,Dinner)



Friday, 13 April

Madrid

The Shrine of Our Lady of Fatima is one of the most famous Marian shrines in the world. Some four million people visit each year, drawn by apparitions of the Virgin Mary to three local shepherd children in 1917. According to Lucia, the oldest, Mary exhorted the children to do penance to save sinners. But most important, she asked them to say the Rosary every day. She reiterated that devotion to the Rosary was the key to personal and world peace.



She reiterated that devotion to the Rosary was the key to personal and world peace.

Sunday, 15 April Madrid - Escorial - Avila - Salamanca

Today's excursion will begin with an in-depth visit to the Palace of El Escorial, seat of Charles V and his son Phillip II. Avila, birthplace of XVI-c Saint Teresa will be our next stop; this lovely fortified town maintains the look and feel of its ancient heritage. Our visit will include the charming downtown as well as the Monastery of the Incarnation (Mass) and the Convent of Saint Teresa. Continuing to Salamanca for **dinner** and overnight at Hotel Fonseca (B,D)

Monday, 16 April Salamanca - Fatima

Morning visit to Salamanca, an ancient Roman town. Known for its University, Salamanca is also home to two Cathedrals and the Renaissance Convent of the Duenas, where Mass will be celebrated before driving through the landscape of the Extremadura, en route to Fatima. Check in and **dinner** at Hotel Cinquentenario. (B,D)

Tuesday, 17 April Fatima

The day will be dedicated to Fatima, including the Basilica, tombs of Francesco and Jacinta, Chapel of the Apparitions (Mass), plus the Stations of the Cross and homes of the little shepherds. **Dinner** and Rosary Procession tonight (subject to weather and seasonal operation). (B,D)



Wednesday, 18 April Fatima - Santarem - Fatima

An excursion to visit Santarem is planned for this morning, including a visit to the site of an important Eucharistic Miracle in the XIII-c. Return to Fatima for an afternoon of prayer and reflection. Msgr. Jameson and the group will participate in this evening's Rosary Procession. **Dinner** at the hotel. (B,D)

Thursday, 19 April Fatima - Lisbon

Morning at leisure. After Mass and lunch (independent), we will depart Fatima for Lisbon. Check-in at Hotel Mundial. **Dinner** will be included this evening. (B,D)



Friday, 20 April Lisbon

The guided city tour of Lisbon will include Jeronimo's Monastery, Convento de Madre de Deus Museum, San Roque and Chapel of John the Baptist. Mass and free time in the afternoon. **Dinner** will be included this evening. (B,D)

Saturday, 21 April Lisbon - Estoril - Sintra - Lisbon

An excursion today along the seashore west of Lisbon will include Estoril, known for its remarkable vistas and luxurious seaside homes. Mass along the way, followed by a visit to Sintra, home to unique and inspiring architecture! Farewell **dinner** for the group in Lisbon. (B,D)

Sunday, 22 April Lisbon - Paris - Dulles - Washington, DC

Closing Mass this morning en route to the airport. The group's outbound flight is AF 1025, departing at 11h15 and arriving CDG at 14h45, connecting with AF 026 departing at 16h35 and arriving IAD at 19h05 on the same day. Immigration and customs formalities before meeting our charter bus for the ride to St. Matthew's Cathedral. (B)

END OF YOUR PILGRIMAGE... WELCOME HOME!



A PERSONAL INVITATION

25 August 2011

Msgr. Jameson cordially invites you to participate in this remarkable Pilgrimage to Spain and Portugal. Designed as a special occasion to visit places in both countries that have great importance in the history of Catholicism, the Pilgrimage will also afford participants a unique opportunity to get to know fellow parishioners while growing spiritually both individually and as part of a community.

We are happy to enlist Guido Adelfio, President of Bethesda Travel Center (celebrating their 50th year of specializing in custom itineraries and Pilgrimage trips throughout Europe) to design and carry out Pilgrimage logistics. Signing up is easy - all you need is a current valid passport (good for 6 months past the date of travel), and Guido will take care of the rest! Feel free to contact Bethesda Travel for further details at 301-656-1670 or email ciao@bethesdatravel.com - or simply submit your completed and signed application by mail along with your deposit check for \$500 p/p and passport copies.

We truly look forward to your interest and participation!



TERMS & CONDITIONS

This Pilgrimage trip has been uniquely designed for St. Matthew's Cathedral, and is offered at a cost of \$3,499 (per person [p/p], share basis) with a limited number of singles available at a supplement of \$775. The cost is inclusive of round trip airfares (in coach), door-to-door charter motorcoach transportation throughout, 4-star accommodations with daily hotel breakfasts, all meals as indicated in bold (including special events), all entry fees to featured sights, portage of one piece of luggage p/p (maximum 50 lbs), as well as all taxes and touring as per the detailed itinerary. Holy Mass will be celebrated each day during the Pilgrimage. Payments should be made by check payable to Bethesda Travel Center LLC. Please sign up today! Your deposit of \$500 p/p is requested by return check, and all payments are freely refundable up until the balance due date of 15 Jan 2012, after which all payments will become non-refundable. Travel Insurance and Bethesda Travel's "Reassurance" cancellation penalty waiver are available and recommended to all participants.



----- PLEASE RETURN WITH PASSPORT COPIES -----

PILGRIMAGE APPLICATION

Please complete and submit with your deposit check payable to Bethesda Travel Center LLC



Cathedral of St. Matthew the Apostle
PATRON SAINT OF CIVIL SERVANTS

Dear Guido,

Yes! I am/we are excited about the Pilgrimage!

Enclosed is my/our enrollment application for the St. Matthew's Pilgrimage to Spain & Portugal, 11-22 April 2012!

Please mail with passport copies to:

Bethesda Travel Center LLC
4422 East West Highway
Bethesda MD 20814

TEL: 301-656-1670
FAX: 301-656-6244
EMAIL: ciao@bethesdatravel.com

Name(s) _____

Address _____

Tel _____ Cell _____

Email _____

Date(s) of Birth _____

Single room requested (\$775 supplement) Y / N

My/our deposit check of \$500 per person is here enclosed, payable to Bethesda Travel Center LLC, along with a copy of my/our passport informational pages.
(NOTE: passports should be valid for 6 months after the date of travel!)

I/we hereby attest that I am/we are in reliable physical condition and able to walk up to 1.5 miles at a stretch.

SIGNED _____



**bethesda
travel
center**

You're about to take
the best vacation of your life.

4422 East West Highway
Bethesda, MD 20814
USA

301.656.1670

www.bethesdatravel.com