

Cathedral of Saint Matthew the Apostle

Washington, District of Columbia

Fourth Sunday of Advent

December 22, 2024

Celebration of the Eucharist at 5:30pm



Entrance

Ready the Way

Refrain

Read-y the way, read-y the way, read-y the way
of the Lord. of the Lord.

The musical notation is written on a single staff in treble clef with a key signature of one sharp (F#) and a 4/4 time signature. The refrain consists of a series of eighth and quarter notes. The first verse is marked with a '1' and the second with a '2'. The lyrics are placed below the notes.

Text: Based on Isaiah 40:3, 4a. Text and music © 2004, Curtis Stephan.
Published by spiritandsong.com®. All rights reserved.

Responsorial Psalm

Lord, make us turn to you; let us see your face and we shall be saved.

The musical notation is written on a single staff in treble clef with a key signature of one sharp (F#) and a 2/4 time signature. The melody is simple and consists of eighth and quarter notes. The lyrics are placed below the notes.

Gospel Acclamation

Cantor *All*

Al-le-lu ia, al - le - lu-ia. Al-le-lu ia, al - le - lu-ia.

Cantor *All*

Al - le-lu - ia, al-le-lu-ia. Al - le-lu - ia, al-le-lu-ia.

Cantor *All*

Al - le-lu - ia, al-le-lu-ia. Al - le-lu - ia, al-le-lu - ia.

Published with the approval of the Committee on Divine Worship,
United States Conference of Catholic Bishops.
Music Copyright © 2023 GIA Publications, Inc. • All rights reserved



Please scan this QR code to contribute to St. Matthew's Cathedral so that we may continue to serve the needs of our parish community and those who come to us for assistance and comfort.

Preparation Lo, How a Rose

Lo, how a rose e'er bloom - ing from ten - der stem hath
I - sa - iah 'twas fore - told it, the rose I have in
This flower, whose fra-grance ten - der with sweet-ness fills the

5
sprung! Of Jes - se's lin - eage com - ing as men of old have
mind. With Ma - ry we be - hold it, the Vir - gin Moth - er
air, dis - pels with glo - rious splen - dor the dark - ness ev - 'ry -

10

sung. It came, a flow-'ret bright, a - mid the cold of
 kind. To show God's love a - right she bore to men a
 where. En - fleshed, yet ver - y God, from sin and death He

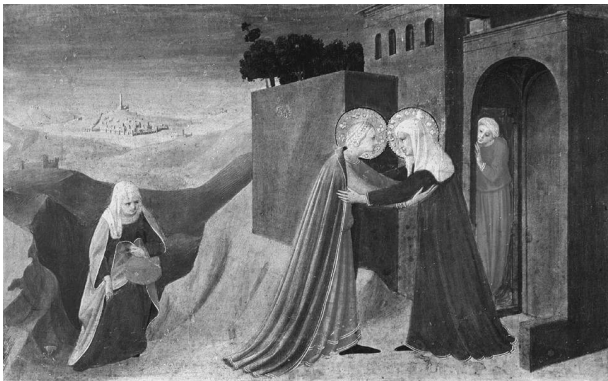
14

win - ter when half spent — was the night.
 Sav - ior when half spent — was the night.
 saves us and light - ens — ev - 'ry load.

Communion Creator of the Stars of Night/Come O Lord

Come, O Lord, and bring your light, O ra-diant
 star, our hearts' de - light. O God-with-us, Em-man-u -
 el, with your love, the dark dis - pel.

Text: *Creator alme siderum*, Latin 9th. C.; tr. *The Hymnal* 1982, © 1985, The Church Pension Fund; refrain, Carol E. Browning, b.1956, © 2004, GIA Publications, Inc.
 Tune: CONDITOR ALME SIDERUM, LM; Mode IV; acc. and refrain music by Carol E. Browning, b.1956, © 2004, GIA Publications, Inc.



Blessed
 are you
 who
 believed...

Final Hymn

O Come, O Come Emmanuel



1. O come, O come, Em - man - u - el,
 2. O come, O Wis - dom from on high,
 3. O come, O come, great Lord of might,
 4. O come, O Rod of Jes - se's stem,
 5. O come, O Key of Da - vid, come,



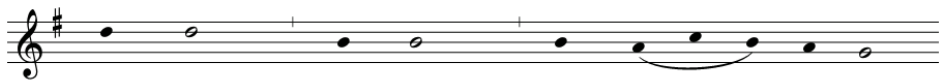
And ran - som cap - tive Is - ra - el,
 Who or - der all things might - i - ly;
 Who to your tribes on Si - nai's height
 From ev - 'ry foe de - liv - er them
 And o - pen wide our heav'n - ly home;



That mourns in lone - ly ex - ile here
 To us the path of knowl - edge show,
 In an - cient times once gave the Law
 That trust your might - y power to save,
 Make safe the way that leads on high,



Un - til the Son of God ap - pear.
 And teach us in her ways to go.
 In cloud and maj - es - ty and awe.
 And give them vic - t'ry o'er the grave.
 And close the path to mis - er - y.



Re - joice! Re - joice! Em - man - u - el



Shall come to you, O Is - ra - el.

6. O come, O Dayspring from on high,
 And cheer us by your drawing nigh;
 Disperse the gloomy clouds of night,
 And death's dark shadow put to flight.

7. O come, Desire of nations, bind
 In one the hearts of humankind;
 O bid our sad divisions cease,
 And be for us our King of Peace.